



<b>EAN:</b>	4013288196477	<b>Size:</b>	122x83x23 mm
<b>Part number:</b>	05078721001	<b>Weight:</b>	93 g
<b>Article number:</b>	7790/2	<b>Country of origin:</b>	TW
		<b>Customs tariff number:</b>	82079099

- Square insert tool 14x18 mm
- For torque wrenches of the Click-Torque X series with 14x18 mm holder
- For welding on specifically required tools
- With safety pin
- Forged, phosphated

Push-fit weld-on adapter; for torque wrenches of the Click-Torque X series with 14x18 mm holder.

**Web link**

[https://products.wera.de/en/torque\\_tools\\_series\\_click-torque\\_wrenches\\_series\\_insert\\_tools\\_7790\\_2.html](https://products.wera.de/en/torque_tools_series_click-torque_wrenches_series_insert_tools_7790_2.html)

Wera - 7790/2  
05078721001 - 4013288196477

Wera Werkzeuge GmbH  
Korzter Straße 21-25  
D-42349 Wuppertal  
Tel: +49 (0)2 02 / 40 45-0  
E-Mail: [info@wera.de](mailto:info@wera.de)

Series Insert Tools

Drive 14x18 mm

Push-fit weld-on adapter

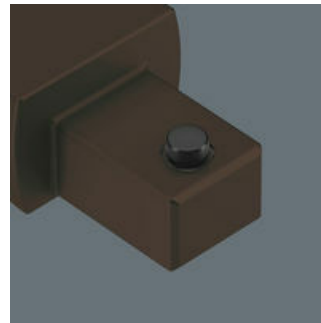
With safety pin



For torque wrenches of the Click-Torque X series with 14x18 mm holder.



For welding on specifically required tools; for torque wrenches of the Click-Torque X series with 14x18 mm holder.



The safety pin of the insert tools enables safe working and fast tool change.

Further versions in this product family:



mm



mm



mm



mm

05078721001

38.0

13.0

31.0

22.0

Web link

[https://products.wera.de/en/torque\\_tools\\_series\\_click-torque\\_wrenches\\_series\\_insert\\_tools\\_7790\\_2.html](https://products.wera.de/en/torque_tools_series_click-torque_wrenches_series_insert_tools_7790_2.html)

Wera - 7790/2

05078721001 - 4013288196477

Wera Werkzeuge GmbH

Korzerter Straße 21-25

D-42349 Wuppertal

Tel: +49 (0)2 02 / 40 45-0

E-Mail: [info@wera.de](mailto:info@wera.de)